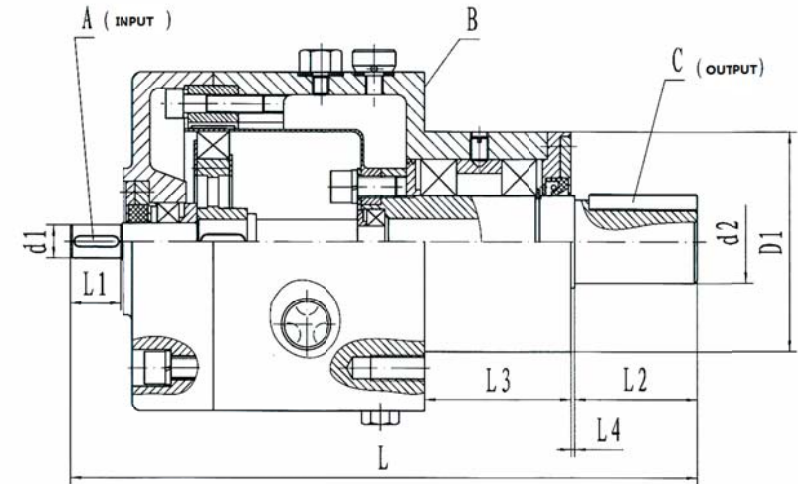
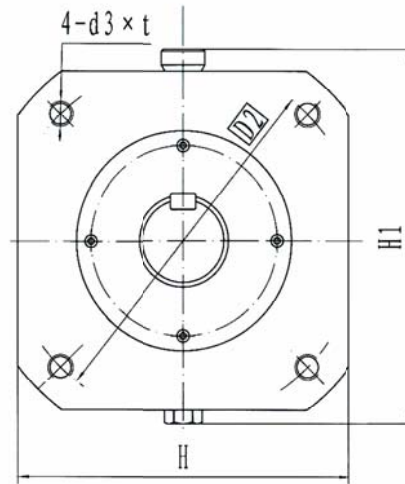
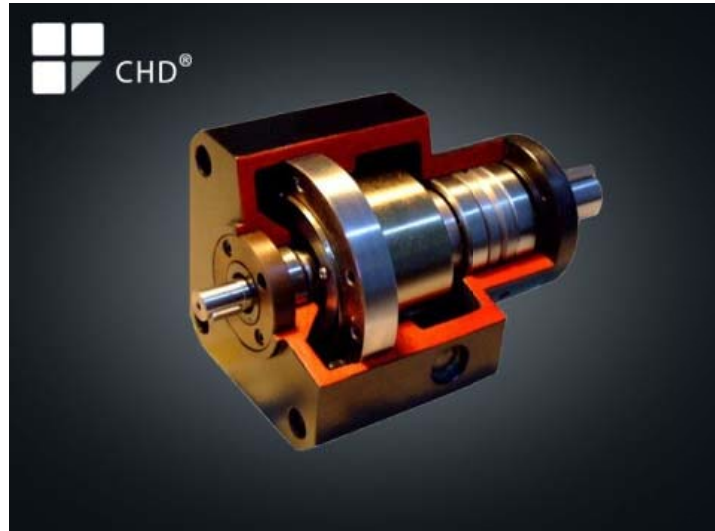


Model Parameters and drawing:

SHD-R Single-stage Harmonic Drive Reducer



Notes: 1. Key for size 25, in column A according to GB 1099-79 2. All other keys according to GB 1096-79 3. B and D1 indicating the datum surface for mounting 4. In installation, the air vent must be on the top of the unit. Dimensions(mm)

Size	d1 (h7)	d2 (h7)	d3xt	D1 (h7)	D2	L	L1	L2	L3	L4	H	H1	A	C
25	Φ4	Φ8	M4x10	Φ30	Φ43	85	8	12	22	1	45	50	KEY 1*1.4*4	KEY C3x10
32	Φ6	Φ12	M5x10	Φ45	Φ55	115	12	16	33	1.25	55	60	KEY 2x8	KEY C4x14
40	Φ8	Φ15	M5x10	Φ50	Φ66	140	16	22	38	1	65	72	KEY 3x12	KEY C5x18
50	Φ10	Φ18	M6x12	Φ60	Φ76	170	18	30	43	2	75	82	KEY 3x15	KEY C6x25
60	Φ14	Φ22	M6x15	Φ68	Φ100	194	18	35	47	2	90	98	KEY 5x14	KEY C6x32
80	Φ14	Φ30	M10x15	Φ85	Φ130	243	20	44	62	2	122	144	KEY 5x16	KEY C8x40
100	Φ16	Φ35	M12x24	Φ100	Φ155	293	24	53	67	3	145	167	KEY 5x20	KEY C10X50
120	Φ18	Φ45	M14x20	Φ120	Φ195	350	28	68	82	3	185	240	KEY 6x24	KEY C14x62
160	Φ24	Φ60	M20x35	Φ140	Φ245	443	38	88	91	3	235	290	KEY 8x32	KEY C18x80
200	Φ30	Φ80	M24x40	Φ180	Φ300	538	48	108	115	3	285	340	KEY 8x40	KEY C22x100
250	Φ35	Φ95	M27x40	Φ215	Φ360	669	60	128	156	2.5	345	423	KEY 10X50	KEY C25x120